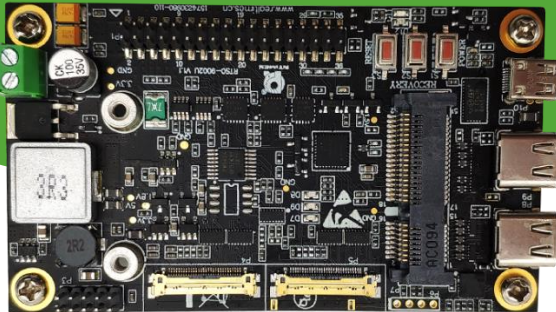




RTS0-9002U Carrier board
 PN: RTS0-9002U
 Adaptive NVIDIA JETSON TX2/TX2i/TX2-4GB
 Version: V1.1



RTS0-9002U is a low-cost, small-volume carrier board with the NVIDIA® Jetson™ TX2 core module. The length and width of the carrier board are the same as those of the NVIDIA Jetson® TX2 module, which is suitable for compact deployment requirements. For industrial deployment applications, the main interface has been designed for electrostatic safety protection, and a highly reliable power supply application solution has been adopted. It has a wealth of external interfaces. The full-board components adopt wide-temperature models.

Product standard

Display	1 x Micro HDMI interface (Max 6Gbps, 24bpp, 4096x2160@60Hz)
USB	2 x USB3.0 interface (Each port has a 5Gbps bandwidth and provides 1A output current)
CAN	2 x CAN
Network	1 x GbE (10/100/1000 BASE-T)
Serial port	3 x 3.3V UART, 1 ↑ Debug UART
GPIO	4 x 3.3V Programmable GPIO
SD	1 x Micro SD card slot
SIM	1 x Micro SIM card slot
Camera interface	2 x MIPI CSI(4LANE)
SPI	1 x SPI
PCIe	1 x Mini-PCIe/mSATA interface
I2C	1 x 3.3V I2C interface
FAN	1 x Fan control interface
Power	+7V~+19V
Size	89mm×50mm×17.5mm
Operating temperature	-40~+85°C
Weight	About 32g

Note: TX2 modules are rated to -25~+80°C



Physical connection with TX2 module

RoHS

